



MATETSI
VICTORIA FALLS

“

If I have ever seen magic,
it has been in Africa.

John Hemingway
Writer and screenwriter

Experience the Magic

Matetsi Victoria Falls is the realisation of our family's dream to marry our passion for conservation and exceptional hospitality, in order to sustainably protect one of the most beautiful landscapes in our home country of Zimbabwe, the 136,000-acre wilderness area that is Matetsi Private Game Reserve. Our own passion for conservation is shared by our dedicated conservation-minded team on the ground that focuses on the preservation of this incredible area. While our lodge team look after our guests with authentic Zimbabwean hospitality, leaving you feeling like a part of our extended Matetsi Victoria Falls family.

Key Highlights of Matetsi Victoria Falls

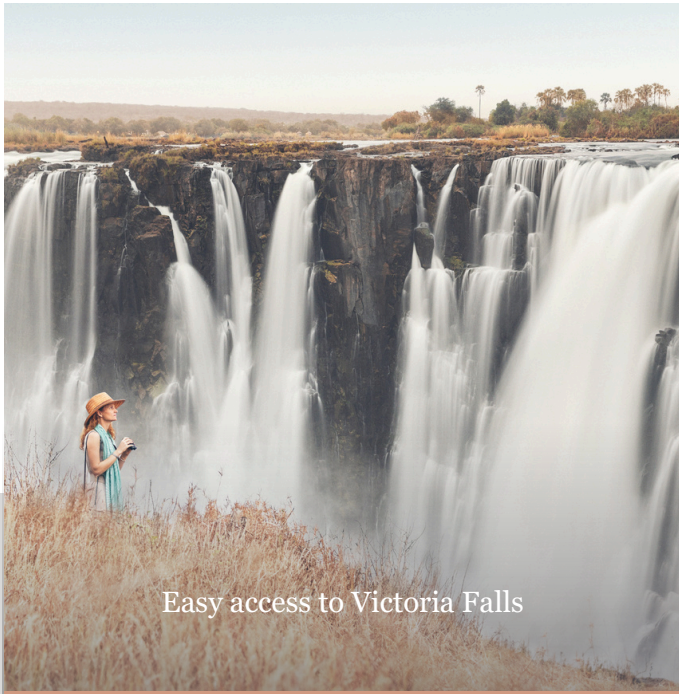
Matetsi Victoria Falls is an idyllic award-winning five-star retreat that provides the ideal base from which to visit the world’s largest waterfall. A sense of freedom, space to breathe and a truly restorative experience are hallmarks of a stay at our family-owned lodge, which offers the ultimate combination of exclusive safari, tranquil river, deep relaxation and the Falls all-in-one. While the superb location, beautifully designed lodge and understated luxury are generally the initial drawcards, it’s the feel of Matetsi, its indelible magic, that our guests love most. Our extraordinary team, including talented chefs, warm hosts, attentive waiters, and charismatic guides, truly elevate the experience here.



136,000-acre private wildlife concession with 9 miles of Zambezi river frontage



Matetsi ‘Magic’ that grants guests opportunity to immerse in nature and luxury



Easy access to Victoria Falls



Accommodation

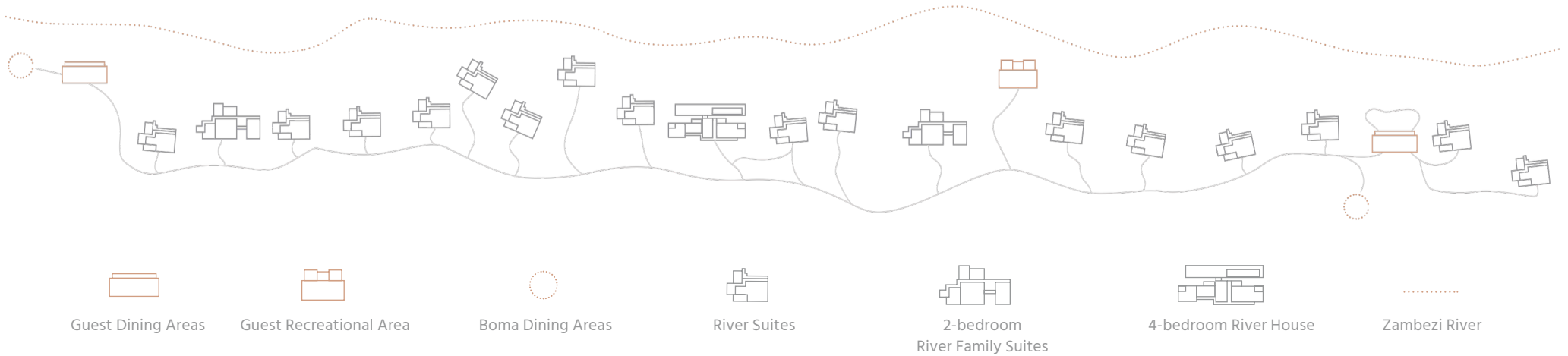
Guests at Matetsi Victoria Falls wake up on the banks of the mighty Zambezi river in rooms that seamlessly flow between interior and exterior living spaces. The contemporary African touches blend into the natural surroundings and feature polished earth finishes, hand-beaten copper detailing and custom works by local artisans. Accommodation options include stand-alone suites, 2-bedroom family suites and the 4-bedroom River House.

By special arrangement, the lodge can also be booked on a full or part exclusive-use basis, depending on your requirements. In these cases, as with the River House, you will have a private guest area and will be looked after by a dedicated team, including manager, chefs, hosts, waiters and guides and trackers to ensure a tailor-made experience.

ACCOMMODATION

Lodge Layout

Positions are approximate and indicative





ACCOMMODATION

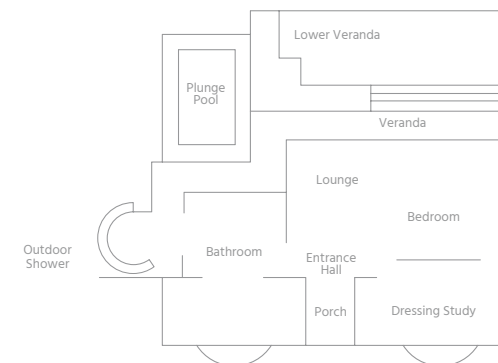
Luxury River Suites

Our River Suites are situated in two intimate camps overlooking a private section of the Zambezi. Each camp has eight suites and one family suite, offering you the ultimate in peace and tranquility. Your hosts, along with our dedicated team, will ensure your every need is taken care of.

- Spacious and air-conditioned
- Sumptuous king-size bed (or twin)
- Large circular bathtub
- Indoor and Outdoor rain showers
- Private Plunge pool
- Deck views of the Zambezi River



Matetsi Victoria Falls



ACCOMMODATION

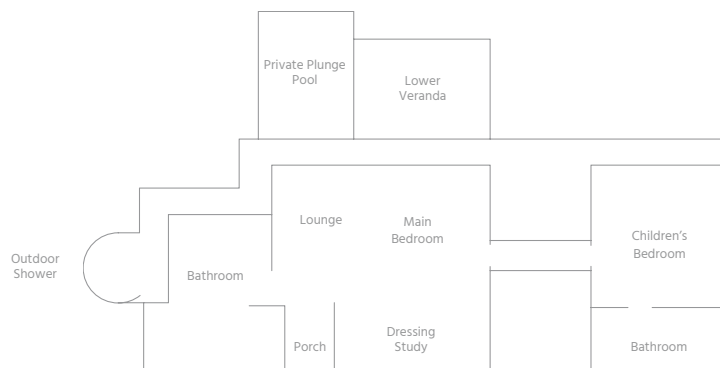
Luxury River Family Suites

Our River Family Suites have been specifically designed with families in mind. Each suite consists of a master suite (as per our River Lodge suites) and a children's room, which is connected via an enclosed passageway.

- Spacious and air-conditioned
- King-size bed / twin beds
- Indoor and Outdoor rain showers
- Private plunge pool
- Deck views of the Zambezi River
- Private safari vehicle



Zambezi River



ACCOMMODATION

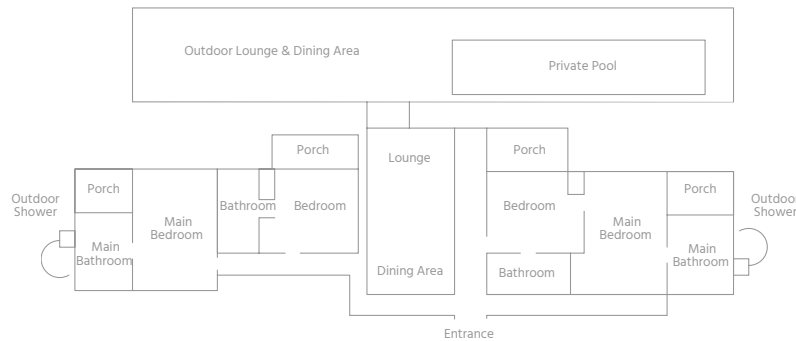
Matetsi River House

Our exclusive-use four-bedroomed River House offers the ideal home-away-from-home for families or friends travelling together. Here you'll be looked after by a dedicated team, including a private chef and hospitable host. A private safari vehicle is at your disposal, with your personal guide and tracker ensuring a tailor-made safari experience.

- Indoor and outdoor lounges
- Covered and al fresco dining areas
- Fireplace
- Wide verandas
- Private swimming pool
- Private safari vehicle
- Views of the Zambezi River



Zambezi River





Dining

Our kitchen team is led by one of the finest chefs on the continent, Executive Chef Mxolisi Ndiweni. Together with his brilliant team of chefs, Chef Mxolisi has taken our cuisine to new heights that guests have likened to some of the best in the world. We understand that food and dining is a key feature of our guests' stay, and we strive to create a variety of memorable experiences in beautiful locations around the lodge. Our menus, which are prepared daily, focus on regionally sourced, exceptional produce. And our chefs are adept at harnessing the best from these ingredients and catering for a wide range of dietary requirements.

Amenities



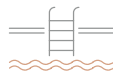
Indoor and outdoor dining spaces



Boma (BBQ) dining area for traditional meals



Al fresco lounge areas



20m lap pool overlooking the river



Air-conditioned suites



Massage sala



Library and boardroom



Fitness studio



Safari boutique



Luxury safari vehicles & boats



Private wine cellar



In-room Bluetooth speakers



Complimentary laundry service



Complimentary in-room and lodge WiFi







Experiences

Matetsi Victoria Falls offers a unique combination experience of exclusive safari, tranquil river, deep relaxation and the spectacular Falls all wrapped up in warm genuine Zimbabwean hospitality. Accompanied by knowledgeable, conservation-minded guides, guests can explore Matetsi Private Game Reserve's 136 000 acres on foot, by luxury safari vehicle or boat. There's a wide range of activities available within Matetsi Private Game Reserve, and Victoria Falls town offers additional activities catering for authentic culture seekers as well as avid adventure enthusiasts.

EXPERIENCES

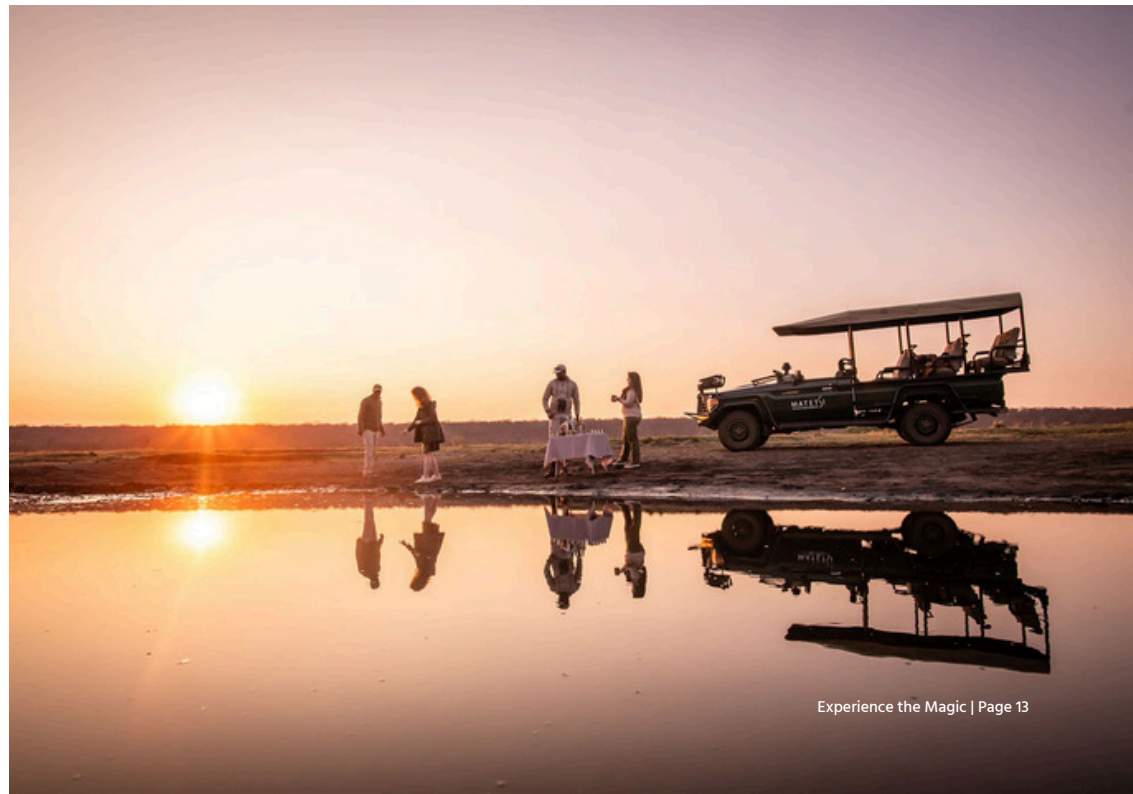
Lodge Experiences

- Zambezi River boat cruises
- Morning and evening game drives
- Night game drives
- Full day game drives
- Birdwatching
- Walking safaris
- Amateur fishing
- Professional fishing*
- Helicopter flights from Matetsi Private Game Reserve*
- Children's activities (and childminders*)
- Spa treatments including massages*
- Conservation Experience: meet the Amaganyane anti-poaching unit
- Conservation Experience: meet the K9 unit

*Activities at an additional cost.

See our Matetsi Victoria Falls children's policy for age restrictions and guidelines.

[Children's policy](#)





EXPERIENCES

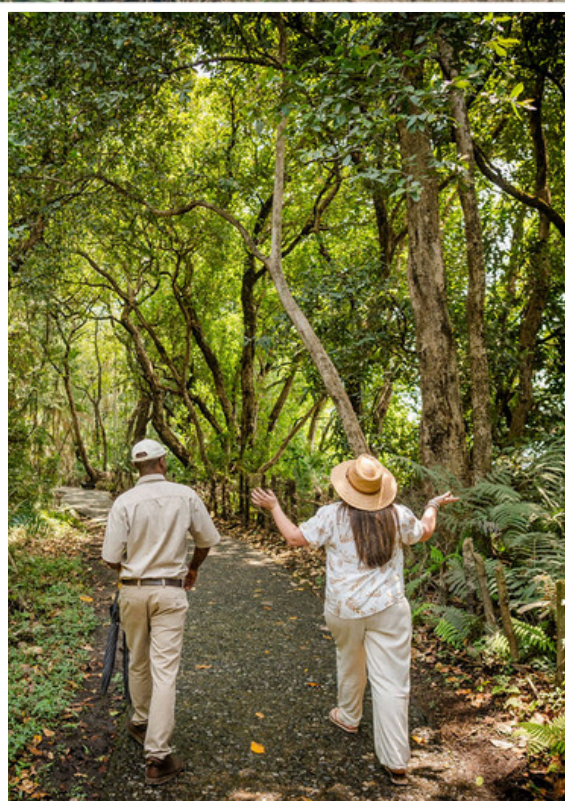
Victoria Falls Excursions

Bespoke excursions including helicopter flights, cultural experiences, adrenaline activities and many more activities are available. These activities can be prebooked through our reservations office. All transport arrangements and services are managed and monitored by Matetsi Victoria Falls to maintain premium standards.

- Tour of the Falls*
- Helicopter flights over the Falls
- Whitewater rafting
- Bungee jumping
- Gorge Swing
- Zipline
- Canopy tour
- Microlight flight
- Horseback safaris
- Community excursions
- Curio shopping
- Village visit and homestead tour
- Visit to the Women & Youth Empowerment Centre



Matetsi Victoria Falls



*Matetsi Victoria Falls offers a complimentary scheduled guided walking Tour of the Falls as part of the standard includes.

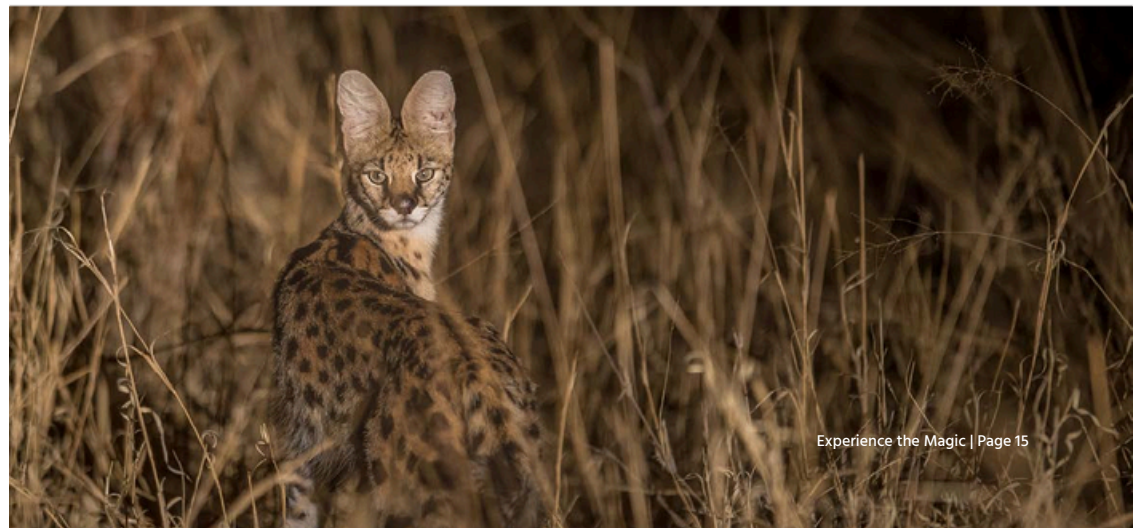
Wildlife

Matetsi Private Game Reserve is home to a dynamic and evolving array of wildlife. Huge breeding herds of elephant and buffalo, consisting of hundreds of animals, are often spotted roaming across this vast wilderness area. Plains game thrive, with journeys of giraffe mingling with dazzles of zebra, herds of impala and sounders of warthog. Big cats grace us with their presence, with sightings of lion and leopard most common. Honey badgers, genets, servals and even armadillos are also known to make appearances. Boat cruises on the Zambezi grant sightings of crocodiles, hippos and even occasional herds of elephant swimming in the river.

Each week our team compile sightings reports that detail which animals and birds they have observed while out on safari with guests or on anti-poaching patrols. And each month, we do a summarised write up of these that we share on our website, featuring photos and anecdotal contributions from our team and our guests:

[View wildlife sightings](#)

Over the years it's been wonderful to see the return of wildlife to the area, evidenced in these reports. This marked increase in wildlife populations and species is living proof that our on-going conservation efforts are having a profoundly positive effect on the area.





Conservation & Community

Our mission is to conserve vast areas of pristine wilderness, protect wildlife and create employment and opportunities for Zimbabweans.

The regeneration of Matetsi Private Game Reserve – which, prior to the establishment of Matetsi Victoria Falls, had been decimated by poaching and illegal hunting – is a source of great pride for our team. It's been ten years of tireless conservation work to rehabilitate the land, protect the wildlife and create a favourable habitat for Africa's most iconic species.



LOVE FOR THE LAND - CELEBRATING 10 YEARS OF UNBOUNDED

20

YEARS OF UNBOUNDED

The journey, whilst challenging at times, has been extremely rewarding. The sight of vast herds of elephant drinking at a waterhole or healthy prides of lion hunting buffalo on the plains is a constant reminder of the incredible turnaround this ecosystem has experienced. From building a vital, clear-roads network to the introduction of 16 solar-powered boreholes and establishing anti-poaching units, the journey continues with on-going conservation work. We're very passionate about protecting our wilderness area and feel honoured to be wildlife guardians.

Our community empowerment starts with our Zimbabwean team on property. Over 200 wonderful individuals, about 60% of whom come from surrounding communities and 40% from across Zimbabwe, which has a very high unemployment rate – it's estimated that one employed individual may support up to 10 others. Through providing opportunities for our team, whole families and communities are supported in turn.

Looking beyond Matetsi Private Game Reserve, and in order to further engage with the rural communities in Northern Matabeleland, we work closely with the GRACE Foundation, which focuses on working with communities to support projects concentrating on health (including nutrition and access to water), education and livelihoods.



136k acres
of wilderness
protected



9 miles
of river
safeguarded



400+
birds & mammal
species



17
solar-powered
watering holes



200+ individuals
employed



4 NPOs
supported



4 vehicles
donated to anti-
poaching initiatives



2 scholarships
provided annually





Seasonal Timings

Matetsi Victoria Falls is a wonderful all year-round destination, with offers and attractions for every season.

	JAN	FEB	MAR	APR	MAY	JUN	JUL	AUG	SEP	OCT	NOV	DEC
Average High Temperature (C°)	30°	29°	30°	29°	27°	25°	25°	28°	32°	33°	32°	30°
Average Low Temperature (C°)	18°	18°	17°	14°	10°	6°	6°	8°	13°	17°	18°	18°
Average Rain Fall (mm)	168	126	70	24	3	1	0	0	2	27	64	174
Average Sunrise Time	05:53	06:10	06:19	06:26	06:35	06:45	06:48	06:36	06:12	05:48	05:33	05:36
Average Sunset Time	18:58	18:51	18:31	18:07	17:51	17:49	17:57	18:06	18:12	18:17	18:30	18:48
Rate Season - Mid(\$) High(\$\$) Peak (\$\$\$)	\$	\$	\$	\$\$	\$\$	\$\$	\$\$\$	\$\$\$	\$\$	\$	\$	\$
Best time for walking safaris												
Best time for game viewing												
Calving season												
Excellent birdwatching												
Dramatic electrical thunderstorms												
First migrant birds arrive												
The Falls at high water*												
The Falls at mid water*												
The Falls at low water*												
Spectacular aerial views of the Falls												
The best time to fish in the Zambezi												
Excellent white-water rafting												
Devil's Pool Experience**												

*Seasonal rainfall, therefore flow varies. ** Offered as part of the Livingstone Island Tour (Zambia)

Preparing for your Journey

Comfort is key

We recommend packing casual versatile clothing appropriate to the season that you're travelling in. Clothing that can be layered is ideal year round, with the addition of very warm clothing (including jacket, scarf, hat and even gloves!) in winter (May to August). Natural or moisture-wicking fabrics in neutral colours (greens, browns and greys) are best for safari activities, rather than white and dark colours (as the latter may attract bugs). We also recommend wearing long sleeved tops and trousers in the early morning and evening.

Should you need to freshen up your wardrobe while on property, we do offer a complimentary laundry service, and we stock a limited range of clothing items in our safari boutique. With regards to footwear, comfortable walking shoes with good grip are ideal for safari and for your tour of the falls. Sandals are nice to wear around the lodge on warmer days.

Capturing the moment

Binoculars and camera (with memory cards and charger or extra batteries) can really enhance your experience. Our rooms have universal plugs, though you may wish to pack your own electrical converter.

The essentials

Ensuring you have all your documentation in order is essential. This includes airline tickets, passport (with sufficient blank pages, valid for at least 6 months after travel), vaccinations booklet, health & travel insurance info etc. We recommend travelling with two copies of key documentation and leaving a third copy of each with your next of kin / emergency contact.

Enjoying the environment




Don't forget to pack your sunscreen, bug spray, lip balm, sunglasses, sun hat, and swimming costume.

Money matters

For your convenience and peace of mind, each of our rooms has a safe. Many of our guests choose to travel with USD cash as well as their credit cards. Kindly note, it is generally not easy to withdraw cash while travelling within Zimbabwe.

Getting here

Matetsi Victoria Falls can be accessed via road transfers from Victoria Falls (Zimbabwe), Livingstone Airport (Zambia) or Kasane (Botswana).

-  [Victoria Falls International Airport](#) | 60 km / 1 hour
-  [Livingstone International Airport](#) | 61 km + border crossing / 1.5 hours
-  [Kasane International Airport](#) | 45 km + border crossing / 1.5 hours

Helicopter transfers are available from Victoria Falls Airport to our helipad, direct flight time is approx. 15 min or there is the option of a scenic "Flight of Angels" over the Victoria Falls. Private flights can be arranged to land on our airstrip.



Health & Well-being

The health and well-being of our guests and our team are our top priorities at Matetsi Victoria Falls.

On property, we follow strict health and safety protocols. We also have a few recommendations for our guests to consider ahead of travel, which we have laid out below.

If you do have any questions, please feel free to reach out to our team on email: info@matetsivictoriafalls.com



Please do travel with your necessary medications including any vitamins and over-the-counter meds that you require, as these may not be available here.



We recommend that you consult your medical practitioner regarding any medical travel advice with regards to your visit to the Victoria Falls area.



We highly recommend that guests are comprehensively covered by their own travel insurance for any medical related expenses that may be incurred while travelling.

“

Everything that we preserve, nurture and create will be our legacy, and as we protect our wild places for wildlife and future generations, we hope to inspire others to do the same.

Sara Gardiner
Co-founder Matetsi Victoria Falls

MATETSI
VICTORIA FALLS

Matetsi Victoria Falls

info@matetsivictoriafalls.com | +263 8677 004 779

www.matetsivictoriafalls.com